



**GREATER TEXAS  
WATER COMPANY**

A large, jagged iceberg floats in the middle of a dark blue ocean. The sky is overcast with grey and blue clouds. The iceberg's surface is uneven and textured, with various peaks and valleys. The water around the iceberg is slightly rippled.

**GREATER TEXAS WATER COMPANY is  
the exclusive distributor for the products of  
Pure Water Inc.**

**Our goal is to save you money on your  
bottle water expenses. Bringing you the  
purest water money can buy.**

# The Pure Water Office, Business Product Line.



# The Pure Water Office, Business Product Line.



- ✓ The Pure Water Office – Business Product Line offers a wide range of products, all producing fresh high purity distilled water for virtually any office or business application.

# Pure Water MINI CLASSIC®



## FEATURES & BENEFITS

Manual Counter Top Unit

Produces 1 gallon per batch  
(about 3.5 hours)

15 Year Limited Warranty

Stainless steel throughout

Attractive plastic refrigerator  
container

Removable Boiling Chamber

# Pure Water MINI CLASSIC®

## HOW IT WORKS.

Boiling chamber is filled at the sink.

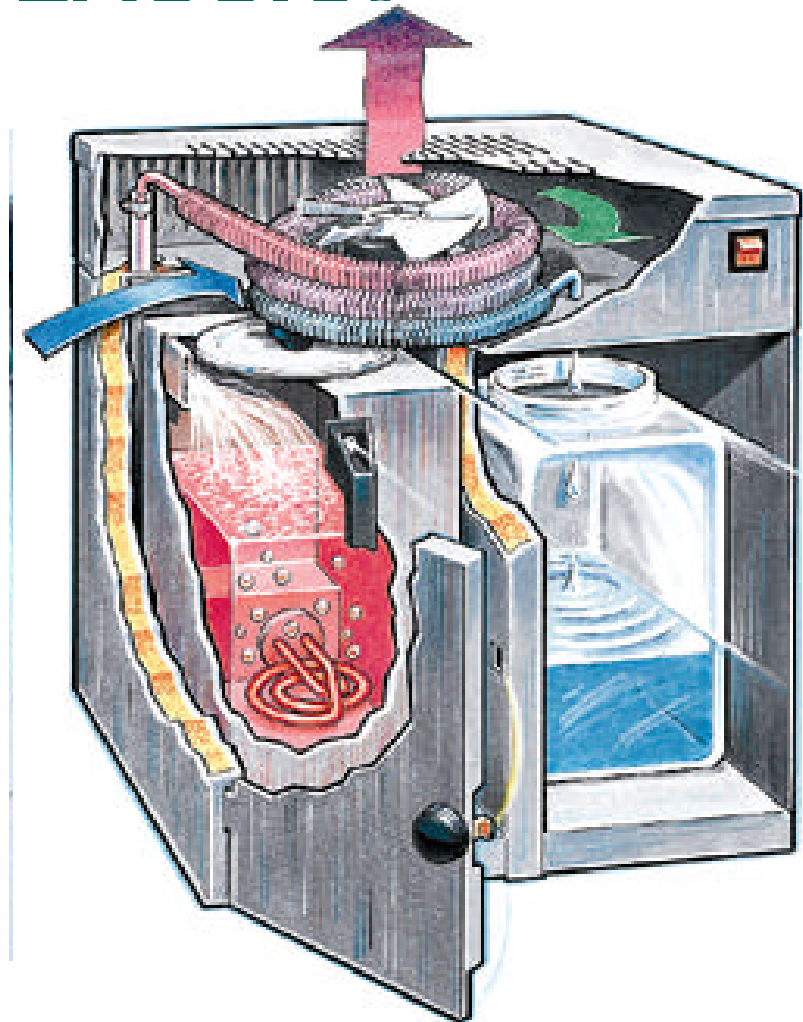
Boiling chamber inserted and door closed.

Unit brings water to a boil

Steam is condensed and converts to distilled water.

Drips through the carbon post filter into...

A removable plastic storage container with spigot.



# Pure Water MINI CLASSIC®



## TARGET MARKET.

The Mini classic is ideal for the small 2-6 person office that cannot cost justify the Fountain Classic.

Recommend two plastic containers – one for refrigerator, the other for the unit.

# Pure Water MINI CLASSIC®



## SPECIFICATIONS

- ❑ 304 Stainless Steel
- ❑ Width: 12.5 inches
- ❑ Height: 16.5 inches
- ❑ Depth: 10 inches
- ❑ Shipping Weight: 27 lbs
- ❑ Unit Weight: 24 lbs
- ❑ Current Draw: 6.9 amps
- ❑ Total wattage: 600 watts
- ❑ Production rate: 1 g. IN 3 hrs
- ❑ Storage: 1 gallon food grade.
- ❑ Approx. 1 gallon each 3.5 hours

# Pure Water MEGA CLASSIC



## FEATURES & BENEFITS

- ❑ Fully automatic distiller
- ❑ 12 gallons per da
- ❑ Built in self drain
- ❑ Built in pump
- ❑ Easy access
- ❑ Overflow protection
- ❑ Quick Connect installation
- ❑ Provides water to sink or refrigerator
- ❑ Optional Floor stand

# Pure Water MEGA CLASSIC



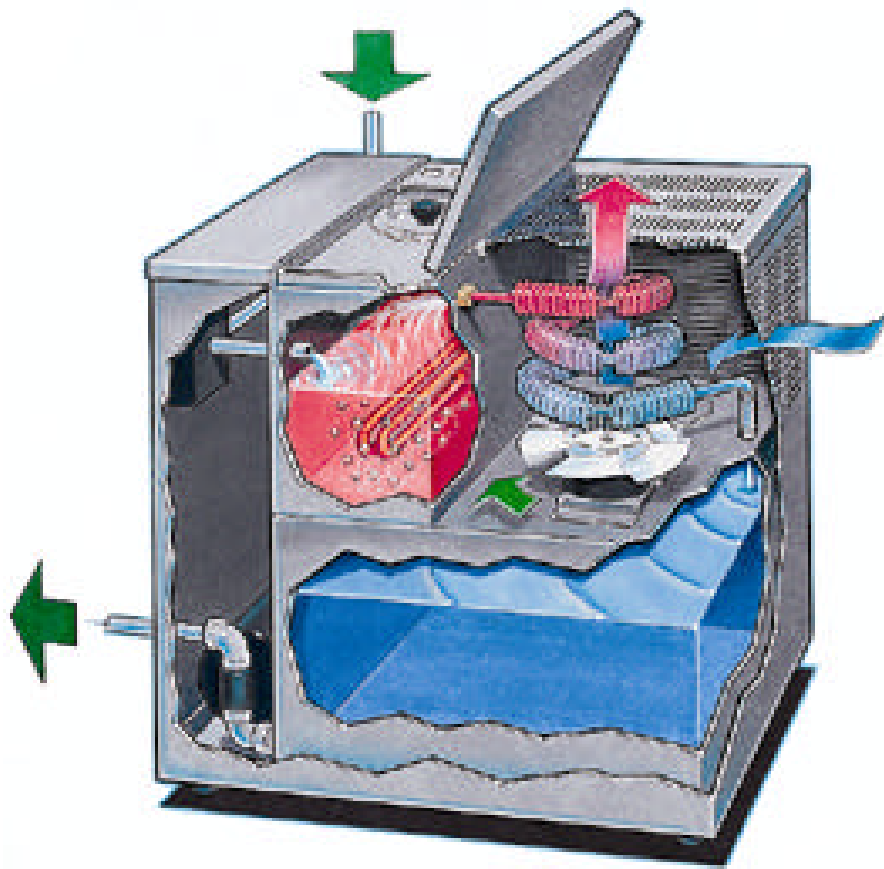
## TARGET MARKET

Targeted to offices and business with moderate usage.

Normally networked to 1 or 2 AquaServe dispensers. A lower cost option than 2 Fountain Classics.



# Pure Water MEGA CLASSIC



## HOW IT WORKS

- ❖ Feed water enters the boiling chamber where it is boiled (killing the micro-organisms). The steam rises and is condensed by heat loss through the condenser. The steam is converted to distilled water and is stored in the storage tank.
- ❖ The unit has a built in drain and pump to pump water on demand to the sink faucet or AquaServe dispensers.

# Pure Water MEGA CLASSIC



## SPECIFICATIONS

- ❑ 304 Stainless Steel
- ❑ Width: 22 inches
- ❑ Height: 22 inches
- ❑ Depth: 16 inches
- ❑ Shipping Weight: 72 lbs
- ❑ Unit Weight: 61 lbs
- ❑ Current Draw: 15 amps
- ❑ Total wattage: 1800 watts
- ❑ Production: Max 12 gals/day
- ❑ Storage: 10 gallon food grade stainless steel
- ❑ Demand Pump: 1.4 gals/minute/

# Pure Water FOUNTAIN CLASSIC

## FEATURES & BENEFITS

Attractive

Small Foot-print

8-10 gallons high-purity distilled  
water per day

Ease of maintenance

Removable boiling chamber

External filter

Back-lit photograph

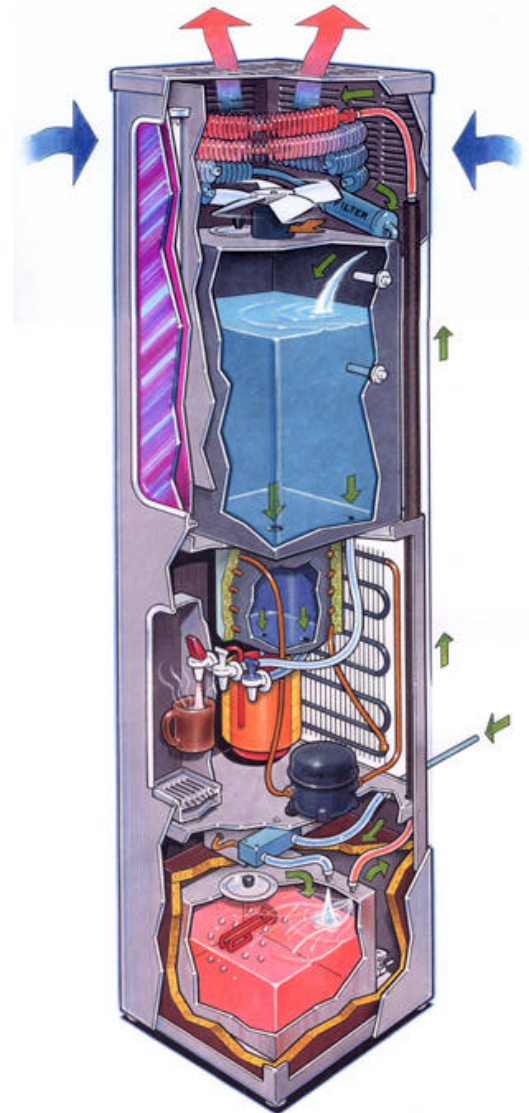
Saves customer money over bottled  
water



# Pure Water FOUNTAIN CLASSIC

## HOW IT WORKS

- ❑ Feed water enters the boiling chamber at base of unit where it is boiled thus killing micro-organisms.
- ❑ The steam rises to the top of the unit where it is condensed and turned to distilled drinking water.
- ❑ The water is filtered and stored in a stainless steel tank. It can be dispensed hot, chilled or at room temperature.



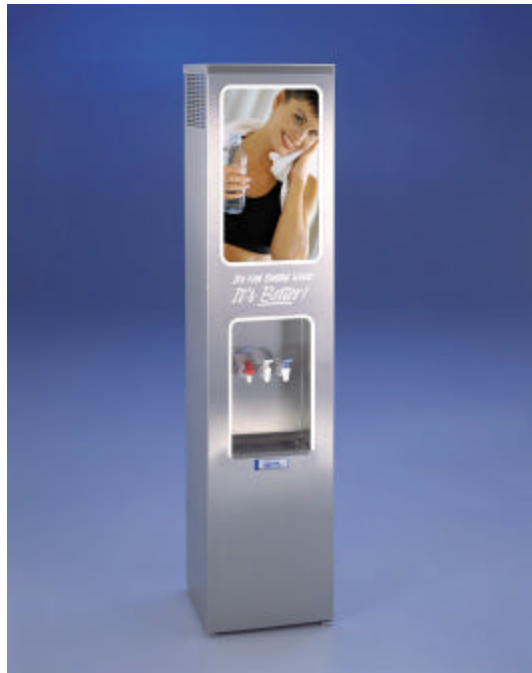
# Pure Water FOUNTAIN CLASSIC



## TARGET MARKET

- Designed specifically to be a more cost effective and attractive alternative to bottled water in offices and businesses.
- The unit has a back-lit display which can be used to advantage.

# Pure Water FOUNTAIN CLASSIC



## SPECIFICATIONS

- ❑ 304 Stainless Steel
- ❑ Width: 14 inches (50 cm)
- ❑ Height: 63 inches ((223 cm)
- ❑ Depth: 13.5 inches (47.8 cm)
- ❑ Shipping Weight: 145 lbs (66 Kg)
- ❑ Unit Weight: 133 lbs (60.5 Kg)
- ❑ Current Draw: 14 amps
- ❑ Total wattage: 1680 watts
- ❑ Production: Max 10 gals/day distilled water.
- ❑ Storage: 10 gallon stainless steel tank
- ❑ 2 Fluorescent tubes.

# Pure Water C-50



## FEATURES & BENEFITS

- ❖ Produces 50 gallons distilled water per day
- ❖ Internal storage for 50 gallons per day
- ❖ Built in pump and filtering system
- ❖ Solid State controls
- ❖ Self Purity Monitoring
- ❖ Patented design
- ❖ Lockable door
- ❖ Can be connected to a series of point-of-use dispensers

# Pure Water C-50



## TARGET MARKET

- Office market where the C-50 acts as a central processing unit and provides high purity water for a network of up to 8 dispensers in various locations.

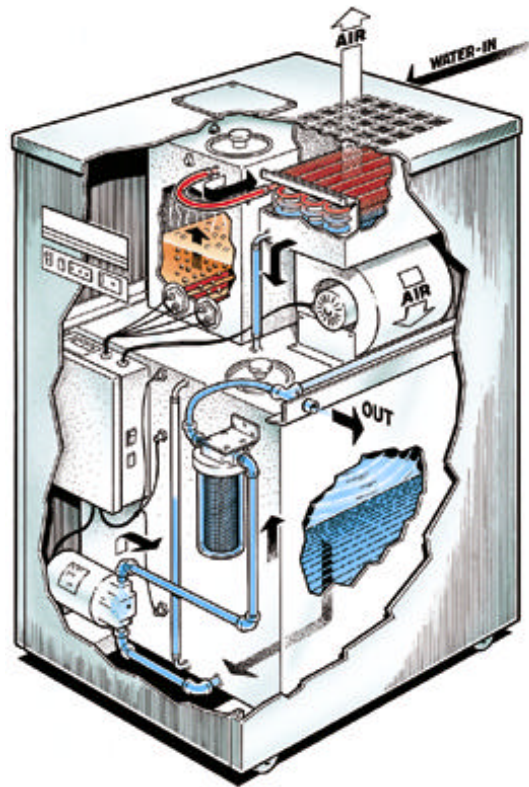
# Pure Water C-50

## SPECIFICATIONS

- ❑ 304 Stainless Steel
- ❑ Width: 24.5 inches
- ❑ Height: 47.5 inches
- ❑ Depth: 31.5 inches
- ❑ Shipping Weight: 238 lbs
- ❑ Unit Weight: 195 lbs
- ❑ Electrical: 50 amp 240 volt AC
- ❑ Heating elements (2) total 6500 watt.
- ❑ Production. Max 10 gals/day
- ❑ Storage: 50 gallon stainless
- ❑ Demand Pump: 3 gals/min.



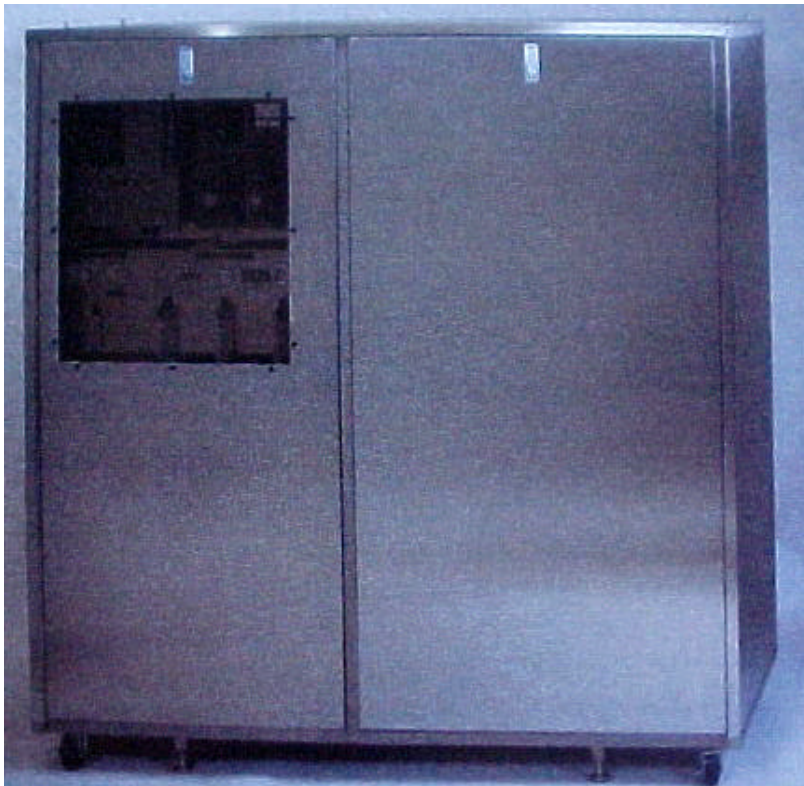
# Pure Water C-50



## HOW IT WORKS

Feed water enters the boiling chamber automatically where it is boiled killing micro-organisms. Steam rises leaving behind virtually all other contaminants. The steam is condensed and the distilled water falls into the 50 gallon storage tank. Water is filtered and then dispensed via a demand pump to the ultimate point of use which could be one of several point of use dispensers (AquaServe).

# Pure Water Larger Sizes.



Pure Water has larger equipment for specialized applications.

Contact Pure Water for more information.

**GREATER TEXAS WATER saves money...**

**COMPARISON at \$7.00 per bottle plus cooler rental of \$7.95**

| <u># of bottles</u> | <u>Monthly cost</u> | <u>Fountain Classic</u> | <u>Savings</u> | <u>% Savings</u> |
|---------------------|---------------------|-------------------------|----------------|------------------|
| 10                  | \$77.95             | \$89.00                 | -\$11.05       | -14.18%          |
| 12                  | \$91.95             | \$89.00                 | \$2.95         | 3.21%            |
| 14                  | \$105.95            | \$89.00                 | \$16.95        | 16.00%           |
| 16                  | \$119.95            | \$89.00                 | \$30.95        | 25.80%           |
| 18                  | \$133.95            | \$89.00                 | \$44.95        | 33.56%           |
| 20                  | \$147.95            | \$89.00                 | \$58.95        | 39.84%           |
| 22                  | \$161.95            | \$89.00                 | \$72.95        | 45.04%           |
| 24                  | \$175.95            | \$89.00                 | \$86.95        | 49.42%           |
| 26                  | \$189.95            | \$89.00                 | \$100.95       | 53.15%           |
| 28                  | \$203.95            | \$89.00                 | \$114.95       | 56.36%           |
| 30                  | \$217.95            | \$89.00                 | \$128.95       | 59.16%           |
| 32                  | \$231.95            | \$89.00                 | \$142.95       | 61.63%           |

A large, jagged iceberg floats in the center of the frame, its surface textured with various shades of blue and white. The water around it is a deep, dark blue. In the foreground, a smaller, more rounded iceberg floats on the surface. The sky is filled with heavy, grey clouds, suggesting an overcast day. The overall mood is somber and stark.

# **GREATER TEXAS WATER COMPANY**

Austin, TX 512-472-9393